

WATER ARMOR - PWA

PROTECTION UP TO 500 BAR / 7.500 PSI

Protective suit for cleaning high pressure water.

Soft, flexible, comfortable and light. Excellent for harsh conditions!



OVERALL WITH HOOD

- Very comfortable lined interior.
- Water and dirt proof.
- Ventilation in the armpit.
- Waterproof cuffs.
- Detachable hood with 3 adjustment possibilities and spacing for ear protection.
- Inside zip pocket.
- Special waterproof pocket for phone.
- 3-layer protection at the front on the head.
- Weight: 2,5 kg / 5.5 lbs (Overall size L)

Armpits ventilation
in the armpits



Comfortable inside arm
cuffs prevent leakage



Hood



JACKET WITH HOOD

- Very comfortable lined interior.
- Water and dirt proof.
- Armpit ventilation
- Waterproof cuffs.
- Detachable hood with 3 adjustment possibilities and spacing for ear protection.
- Inside zip pocket.
- Special waterproof pocket for phone.
- 3-layer protection at the front and on the head.
- Weight: 1,6 kg / 3.5 lbs (Overall size L)

2 Pockets with
waterproof zippers



Waterproof zippers
with overlapping coiler



Pocket for tools



Pocket for ID card on
the right sleeve



WATER ARMOR - PWA



TROUSERS

- Very easy to put on and take off.
- Adjustable elastical waist for perfect fit.
- Water and dirt repellent proof.
- Waterproof pockets and extrawide belt bands/make them more comfortable.
- Zippers down on the legs allow them to widen to donning over boots.
- Weight: 2,5 kg / 5.5 lbs (Overall size L)

Extra wide belt bands



Adjustable back waist



Zippers at the bottom of the legs



Reinforcements on the knees



Pockets for knee pads

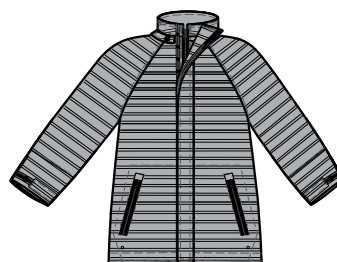


Sizes		
Jacket, Trousers and Overall	Height cm (ft. in.)	Chest cm (in.)
XS	160-167 (5'3"-5'6")	84 (33")
S	168-175 (5'6"-5'9")	92 (36")
M	176-180 (5'9"-5'11")	100 (39")
L	181-186 (5'11"-6'1")	108 (43")
XL	187-192 (6'2"-6'4")	116 (46")
2XL	193-200 (6'4"-6'7")	124 (49")
3XL	201-206 (6'7"-6'9")	132 (52")

Prot. level	Pressure bar (psi)	Flow (l/min)	Nozzle type	Dist. (mm)	Speed (m/s)	Result
5/5/2	500 (7500)	16,9	Rotor - Rotary jet	75	0,5	No penetration
5/5/2	500 (7500)	16,9	Flat - Single fan jet 15°	75	0,5	No penetration
5/5/2	200 (3000)	10,7	Single - Single round jet	75	0,5	No penetration

AREAS WITH PROTECTION

Striped fabric clearly identifies protected areas and the labels give the level of protection. As high pressure cleaning is very dangerous, it is essential that the operator knows where and how what he is protected.



PROTECTION LEVEL 5/5/2

- ROTOR 500 bar/7500 psi
- FLAT 500 bar/7500 psi
- SINGLE 200 bar/3000 psi

CE 89/686/EEC