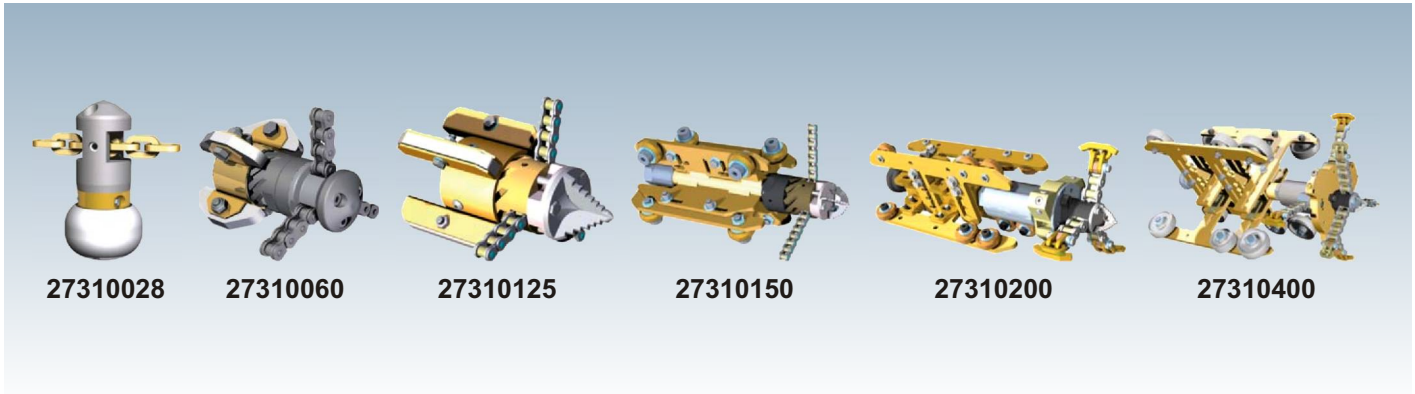


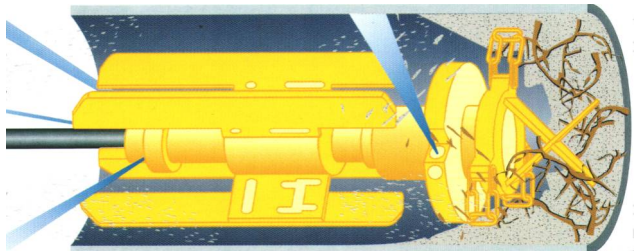
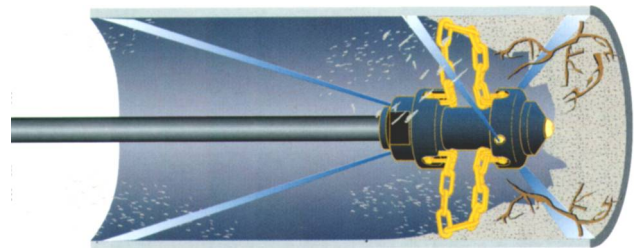
ROOTS CUTTER NOZZLES



■ The roots cutter nozzle is an apparatus of universal use and is simple in handling and maintenance. Several different pipe diameters can be cleaned with the same tool.

■ The depositions of scale layers, concrete residues and roots, are efficiently removed.

■ All apparatus are equipped with central blades. The water jet outs by replaceable ceramic graft nozzles for longer use.



APPLICATIONS:

- Removal total roots.
- Scale removal and deposits.
- As preliminary cleaning before the rehabilitation with internal coatings.
- Elimination of recent concrete fragments in the new pipes before the first inspection.

Máximum working pressure: 150 bar.

IMPORTANT:

The single chain must tear and not strike the walls of the tube. For the ideal length of the chains it must be adjusted to the diameter of every pipe.

Ref.	Diameter (mm)	Length (mm)	Thread connection	Pipes application Ø mm	Min. Flow to 100 bar l/min	Apt for recycler water	Weight (Kg)
27310028	40/28	81	1/4"	40-100	20	-	0,32
27310060A	40	112	3/8"	60-200	30	YES	0,95
27310060B			1/2"				
27310125	60	144	1"	125-300	50	YES	2,50
27310150	135-235	380	1"	150-250	100	YES	12,90
27310200	185-385	560	1"	200-400	200	YES	35,00
27310400	385-785	625	1"	400-800	300	YES	47,00