

# REELS - 30000 SERIES

---

Manual or motor driven reels.



## CHARACTERISTICS

- Steel drum.
- Permanently lubricated dual main bearings.
- Manual driven reels are easily converted to electrical, pneumatic or hydraulic motor.
- Nickel-plated swivel with "Viton" O-ring seals.
- Durable backed polyester powder coated.
- Lock pin to prevent spool rotation when the reel is not use.
- Motor mounting at either end of reel.
- Operating range temperature from -29° to 120°.

## APPLICATIONS

- Car washes.
- Pest control.
- Industrial plants.
- Restaurants, hotels and resorts.
- Golf courses and green houses.
- Agricultural.

# REELS - 30000 SERIES

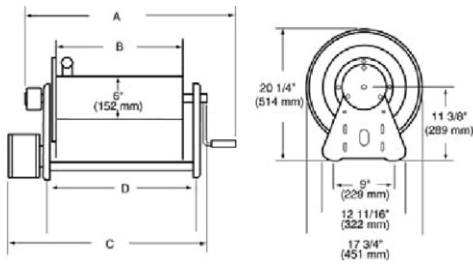


Manual

Pneumatic

Electric

## Dimensions



Code	A	B	C	D	E
C 33106 M	279	152	-	248	483
C 33112 M	432	305	-	400	635
C 33118 M	584	457	-	552	787
E 33106 M12D	279	152	483	248	-
E 33112 M12D	432	305	641	400	-
E 33118 M12D	584	457	794	552	-

Four 1/2" (12,7 mm) diameter mounting holes

Model	Weight (kg)	Pressure (bar)	HOSE CAPACITY			
			Hose I.D.	Hose O.D.	Length (m)	
MODELS WITHOUT HOSE			6 mm	10 mm	13 mm	19 mm
			13 mm	17 mm	21 mm	30 mm

## Crank spools - Maximum temperature 120° C

Model	Weight (kg)	Pressure (bar)	Length (m)			
C 33106 M	17	211	6	43	30	15
C 33112 M	21	211	130	91	61	30
C 33118 M	24	211	191	137	99	53

## Motor spools of 12 Volts D.C. - Maximum temperature 120° C

Model	Weight (kg)	Pressure (bar)	Length (m)			
E 33106 M12D	25	211	61	43	30	15
E 33112 M12D	29	211	130	91	61	30
E 33118 M12D	32	211	191	137	99	53

All 30000 series reels are supplied without hose.