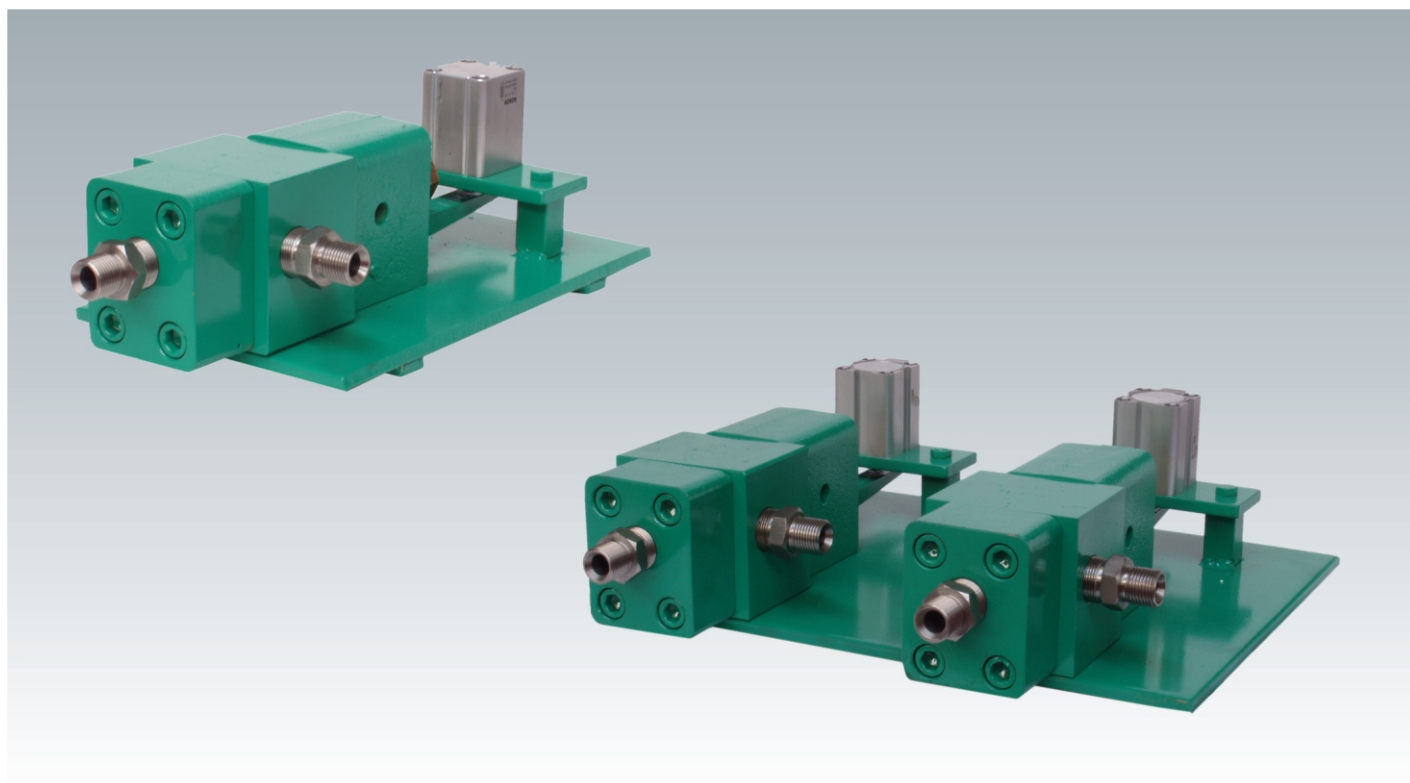


# PNEUMATIC CUT VALVE



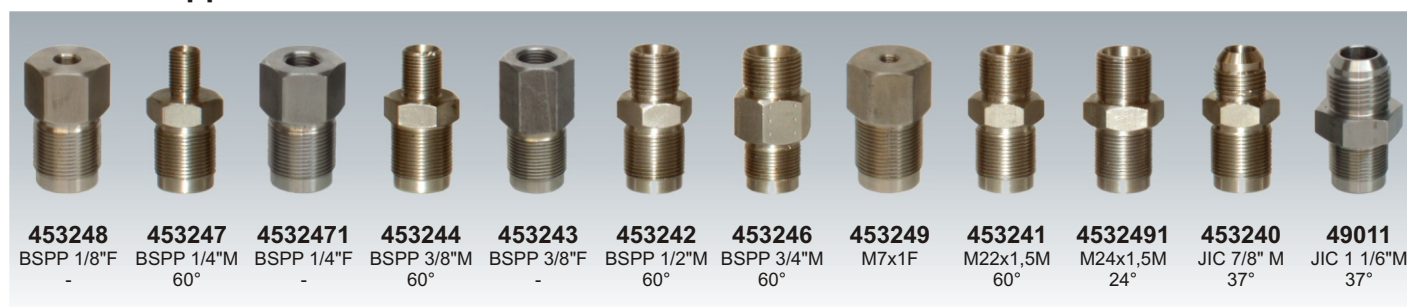
Used for opening-closing the water pressure flow automated by a pneumatic cylinder in industrial systems.

- Designed exclusively to work with water pressure.
- Great longevity with long cycles.
- Stainless steel body.
- Fundamental parts made of corrosion resistant steel with thermal treatment of high wear resistance.
- For systems that need several units, they are given grouped on a support with simple, double, triple and quadruple configuration.



Max. Pressure (bar)	Flow (l/min)	Air pressure (bar)	Type	Dimensions (mm)			Weight (Kg)
				L	W	H	
750	170	2-6	Simple	180	390	125	15
750	170	2-6	Double	380	390	125	30
750	170	2-6	Triple	580	390	125	45
750	170	2-6	Quadruple	780	390	125	60

## Standard nipples



BSPP = Cylindrical thread