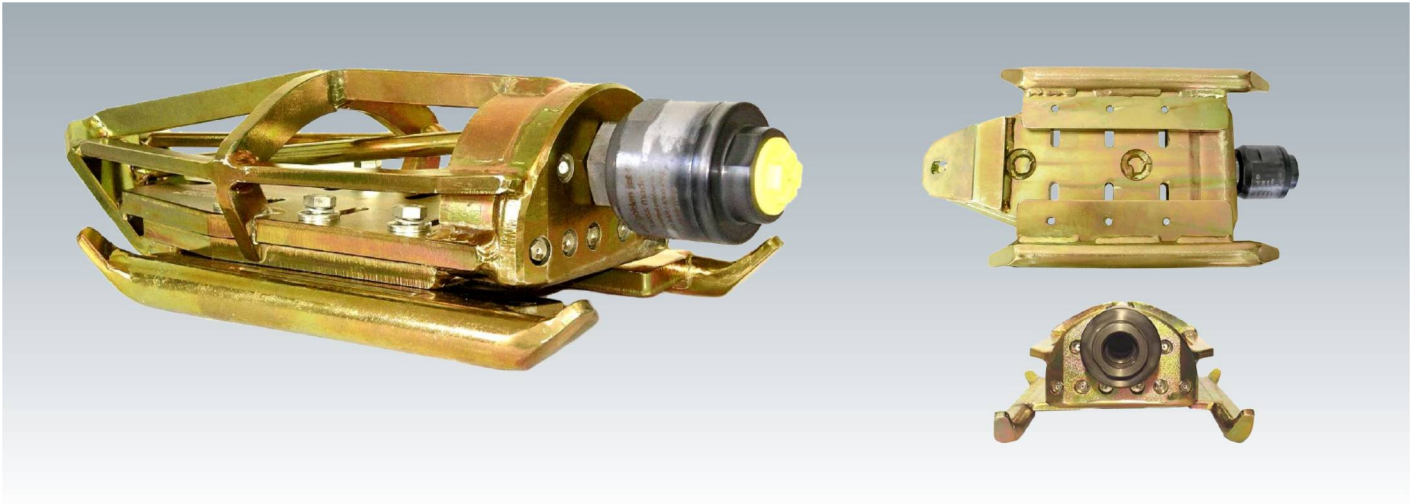
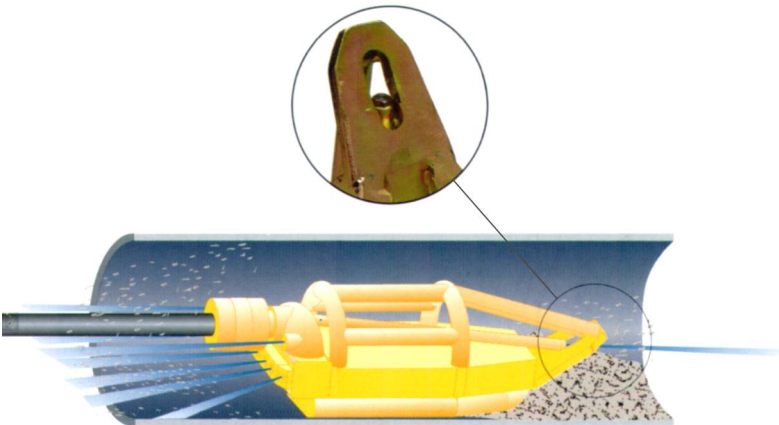


BULLDOZER NOZZLES



The Bulldozer is an optimized heavy nozzle designed to remove sands and stones from the bottom part of the sewages system drain pipes.

It is counter balanced so that it cannot be put on its side and the jets always hit on the bottom part of the pipe. In addition it has a swivel joint so that the hose cannot turn and it remains in the horizontal position.



The water jets out by interchangeable ceramic graft nozzles for long life. It has a configuration so that the water comes out by the nozzles in laminar flow without turbulence and the jets hit with the maximum effectiveness.

A nozzle can be put at the front so that it clears the way and the Bulldozer can penetrate easier. It is also provided with 2 elevated side nozzles so that it cleans both sides of the pipes.

Ref.	Min. Flow a 100 bar (l/min)	Application Ø Pipes (mm)	Thread connection	Nº Nozzles	Dimensions LxAxH (mm)	Weight (Kg)
50.075	100	200 - 500 mm	3/4"	4 + 2 + 1	336x120x108	10
50.100G	150	300 - 1.000 mm	1"	6 + 2 + 1	440x160x150	24
50.125A	300	400 - 2.000 mm	1 1/4"	6 + 2 + 1	530x200x180	36
50.150	400	500 - 4.500 mm	1 1/2"	6 + 2 + 1	550x230x200	45

When ordering, please indicate pressure, flow, hose diameter and length