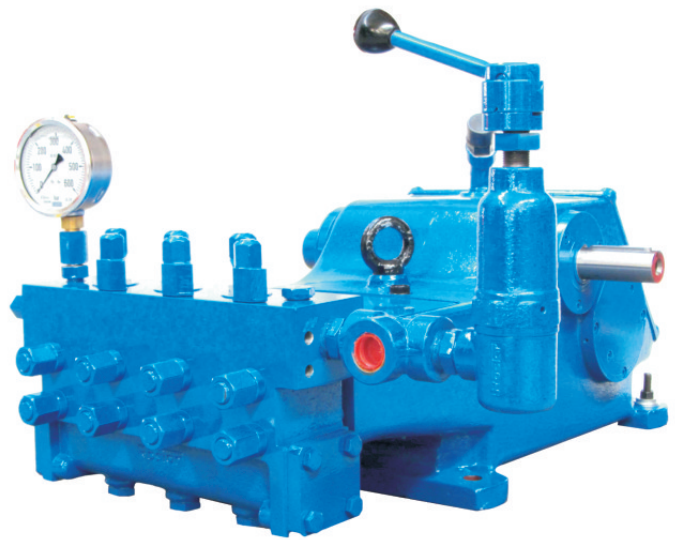


3100 Series 3 plungers 100 HP

- Input shaft left (l) or right viewable from the head.
- Auxiliary P.T.O. shaft on opposite side.
- Internal gear box with reduction 3 in 3100 body type. Reduction 3,63 in 3100R type.
- Stroke: 3"
- Ceramic plungers.
- High pressure A head, low pressure to high volume B head made of spheroidal cast iron or stainless steel.
- Internal parts in contact with the liquid made of resistant corrosion materials.
- Several pressure regulator valves and outlet nipples.



ROSTOR 3100 A01
With regulator valve B

Head type	Heat material	Pump type	Weight (lb)	
High pressure	A01	Spheroidal cast iron	3100A01 / 3100RA01	507
	A02	Stainless steel	3100A02 / 3100RA02	507
Low pressure	B	Spheroidal cast iron	3100B / 3100RB	485
	B02	Stainless steel	3100B02 / 3100RB02	485

A02 - B02: Body head made of stainless steel. Suction manifold made of cast iron.
A1 - B1: All made of stainless steel.

Technical data

Plunger (mm)	Shaft (r.p.m.)	Reduction	Crank shaft (r.p.m.)	Q US (gpm)	Motor power (HP)					
					40	50	60	75	100	
					Working pressure (psi)					
HEAD A01 / A02	24	1500	3,00	500	12,7	4500	5510	6740	8410	10880*
		1800	3,63	495	12,4	4500	5660	6820	8410	10880*
		1500	3,63	413	10,6	5440	6820	8120	10150	-
	26	1500	3,00	500	15,1	3840	4760	5730	7100	9580
		1800	3,63	495	14,8	3840	4760	5800	7100	9580
		1500	3,63	413	12,4	4640	5800	6960	8700	-
	30	1500	3,00	500	19,8	2900	3630	4350	5370	7250
		1800	3,63	495	19,6	2900	3630	4350	5370	7250
		1500	3,63	413	16,4	3480	4350	5220	6525	-
35	1500	3,00	500	26,4	2100	2610	3190	3920	5230	
	1800	3,63	495	26,2	2100	2680	3190	3920	5230	
	1500	3,63	413	22,5	2540	3190	3840	4785	-	
40	1500	3,00	500	35,7	1600	2030	2470	2900	4060	
	1800	3,63	495	35,1	1600	2030	2470	2900	4060	
	1500	3,63	413	29,1	1960	2460	2900	3625	-	
45	1500	3,00	500	44,9	1230	1600	1890	2320	3190	
	1800	3,63	495	44,4	1300	1600	1890	2320	3190	
	1500	3,63	413	37,0	1520	1890	2320	2900	-	
HEAD B / B02	50	1500	3,00	500	56,8	1010	1300	1520	1890	2540
		1800	3,63	495	56,3	1010	1300	1520	1890	2540
		1500	3,63	413	46,8	1230	1520	1810	2320	-
	55	1500	3,00	500	68,7	870	1010	1300	1600	2100
		1800	3,63	495	68,2	870	1010	1300	1600	2100
		1500	3,63	413	56,8	1010	1230	1520	1890	-
	60	1500	3,00	500	81,9	720	870	1090	1300	1740
		1800	3,63	495	81,1	720	870	1090	1300	1740
		1500	3,63	413	67,4	800	1010	1230	1600	-



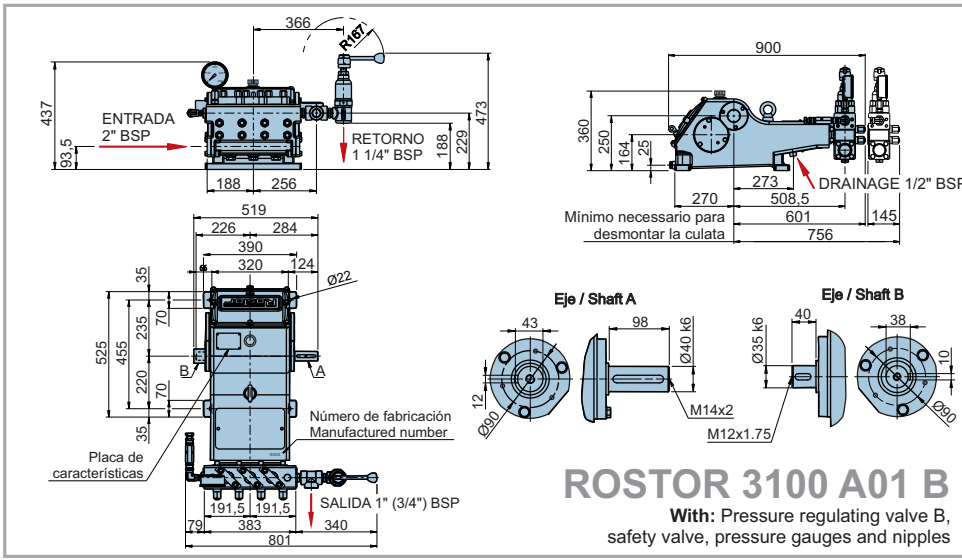
3100 A02
With regulator valve N1



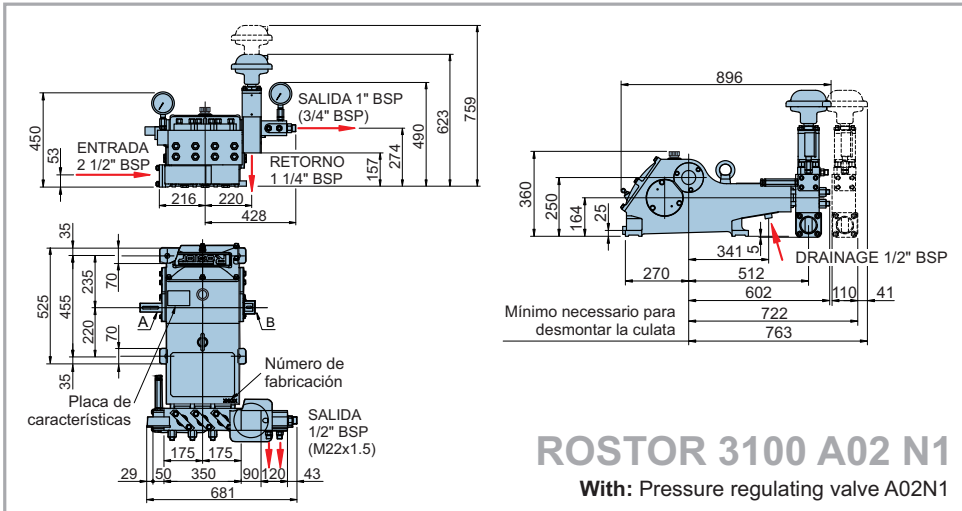
3100 B
With regulator valve CN1

Higher pressure than 4350 psi we recommend the A02 stainless steel head.

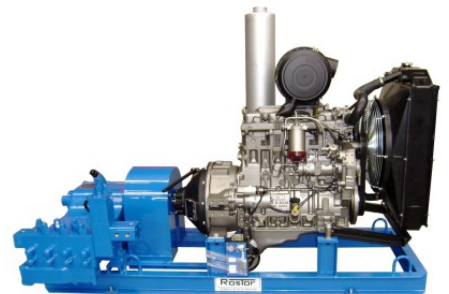
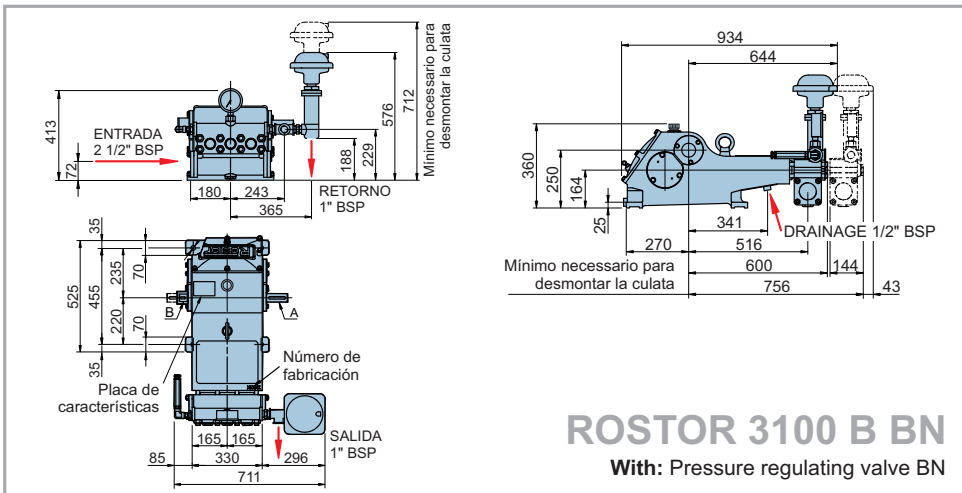
Crankshaft speed to 413 r.p.m. or inferior for intensive use, the rest intermittent use.



3100A02 - 100 HP
660 bar - 57 l/min



3100RB - 100 HP
145 bar - 258 l/min



3100A02 - 100 HP
280 bar - 135 l/min

