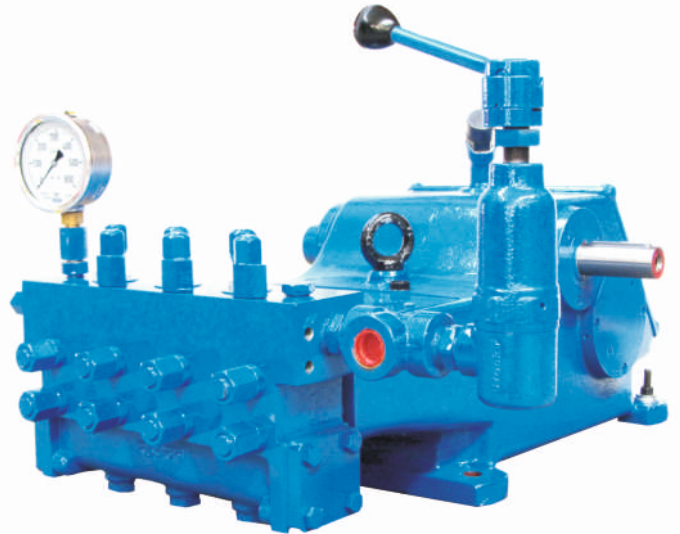




HIGH PRESSURE PUMPS

3100 Series 3 plungers 100 HP (75 Kw)

- Input shaft left (I) or right viewable from the head.
- Auxiliary P.T.O. shaft on opposite side.
- Internal gear box with reduction 3 in 3100 body type. Reduction 3,63 in 3100R type.
- Stroke: 75 mm.
- Ceramic plungers.
- High pressure A head, low pressure to high volume B head made of spheroidal cast iron or stainless steel.
- Internal parts in contact with the liquid made of resistant corrosion materials.
- Several pressure regulator valves and outlet nipples.



ROSTOR 3100 A01
With regulator valve B

Head type	Heat material	Pump type	Weight (Kg)
-----------	---------------	-----------	-------------

High pressure	A01	Spheroidal cast iron	3100A01 / 3100RA01	230
	A02	Stainless steel	3100A02 / 3100RA02	230
Low pressure	B	Spheroidal cast iron	3100B / 3100RB	220
	B02	Stainless steel	3100B02 / 3100RB02	220

A02 - B02: Body head made of stainless steel. Suction manifold made of cast iron.
A1 - B1: All made of stainless steel.

Technical data

Plunger (mm)	Shaft (r.p.m.)	Reduction	Crank shaft (r.p.m.)	Q (l/min)	Motor power (HP / Kw)					
					40 / 30	50 / 37	60 / 44	75 / 55	100 / 75	
					Working pressure (bar)					
HEAD A01 / A02	24	1500	3,00	500	48	310	380	465	580	750*
		1800	3,63	495	47	310	390	470	580	750*
		1500	3,63	413	40	375	470	560	700	-
	26	1500	3,00	500	57	265	330	395	490	660
		1800	3,63	495	56	265	330	400	490	660
		1500	3,63	413	47	320	400	480	600	-
	30	1500	3,00	500	75	200	250	300	370	500
		1800	3,63	495	74	200	250	300	370	500
		1500	3,63	413	62	240	300	360	450	-
	35	1500	3,00	500	100	145	180	220	270	360
		1800	3,63	495	99	145	185	220	270	360
		1500	3,63	413	85	175	220	265	330	-
40	1500	3,00	500	135	110	140	170	200	280	
	1800	3,63	495	133	110	140	170	200	280	
	1500	3,63	413	110	135	170	200	250	-	
45	1500	3,00	500	170	85	110	130	160	220	
	1800	3,63	495	168	90	110	130	160	220	
	1500	3,63	413	140	105	130	160	200	-	
HEAD B / B02	50	1500	3,00	500	215	70	90	105	130	175
		1800	3,63	495	213	70	90	105	130	175
		1500	3,63	413	177	85	105	125	160	-
	55	1500	3,00	500	260	60	70	90	110	145
		1800	3,63	495	258	60	70	90	110	145
		1500	3,63	413	215	70	85	105	130	-
60	1500	3,00	500	310	50	60	75	90	120	
	1800	3,63	495	307	50	60	75	90	120	
	1500	3,63	413	255	55	70	85	110	-	



3100 A02
With regulator valve N1

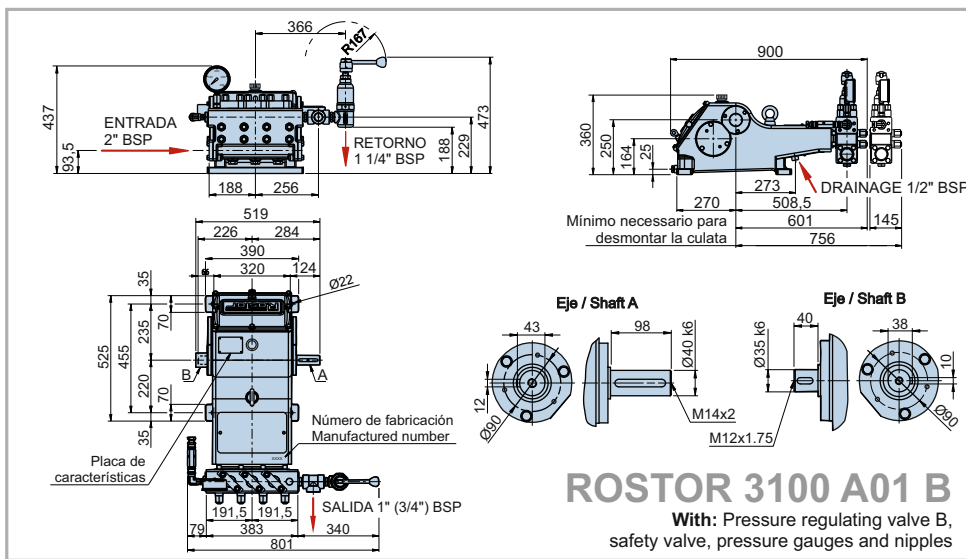


3100 B
With regulator valve CN1

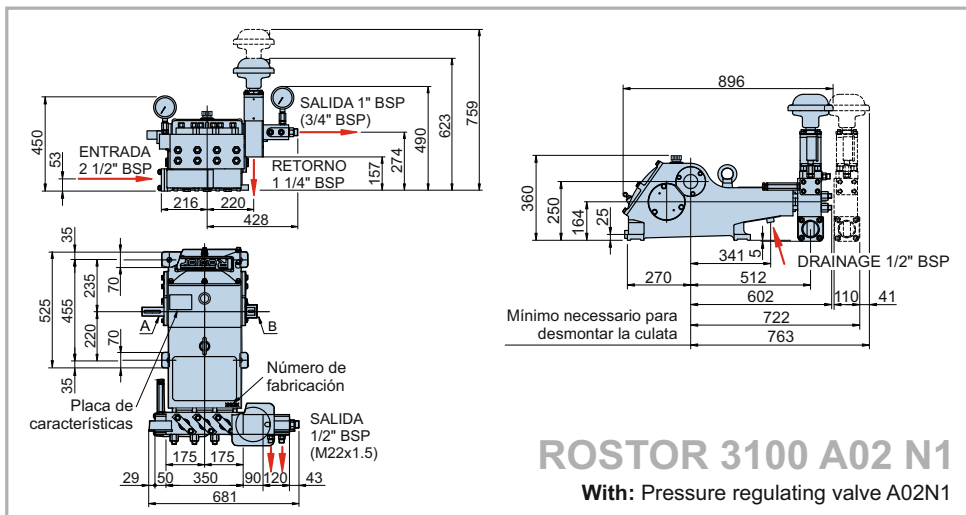
* To obtain this pressure is needed less power than indicated.

Higher pressure than 300 bar we recommend the A02 stainless steel head.

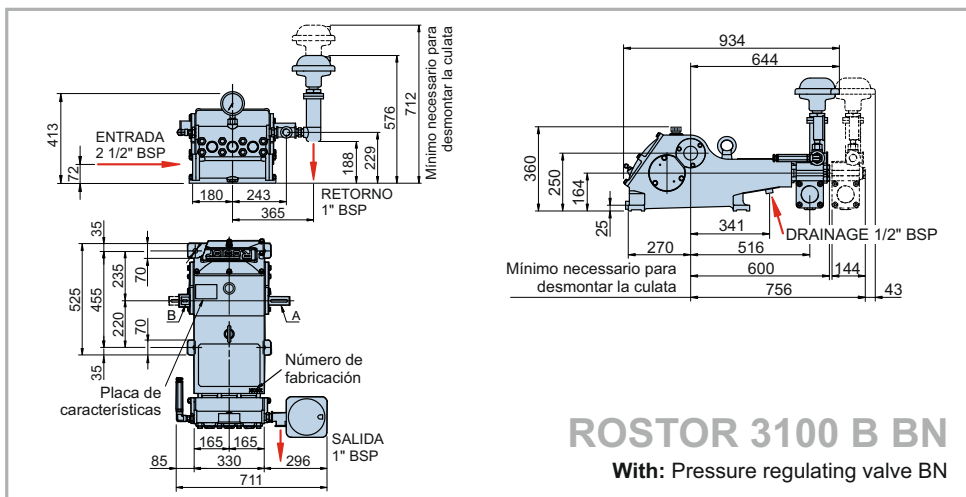
Crankshaft speed to 413 r.p.m. or inferior for intensive use, the rest intermittent use.



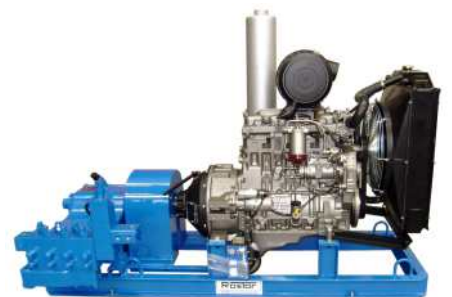
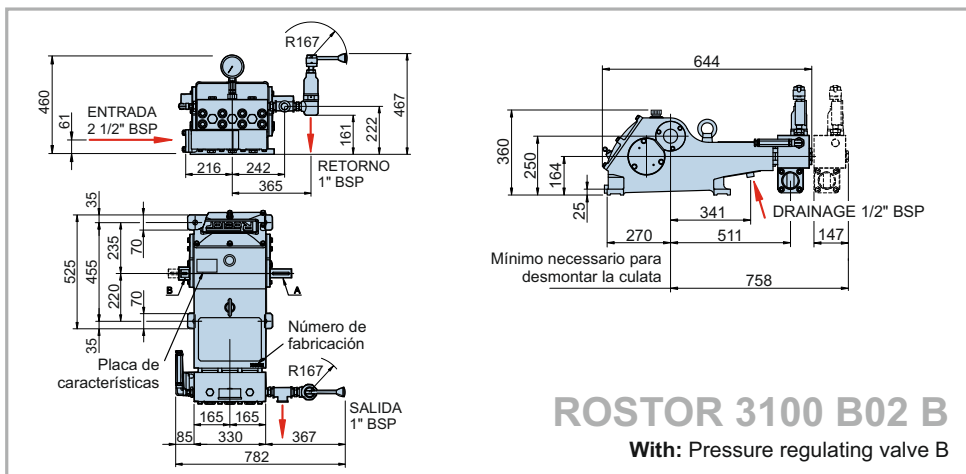
66U bar - 5/ l/min



3100A02 - 75 HP
490 bar - 57l/min



3100RB - 100 HP
145 bar - 258 l/min



3100A02 - 100 HP
280 bar - 135 l/min